



A THOUGHTFULLY
PLANNED
PARADISE

Project Approved By



Marketed By
**SHUBHAM
GROUP**

Sales Office
Landmark Paradise (Near C Block)
Landmark City,
Bundi Road, kota - 324001
Ph: 0744 6441444

Landmark
PARADISE

Promoter
**RESONANT WEALTH
CONSULTANCY PVT. LTD**

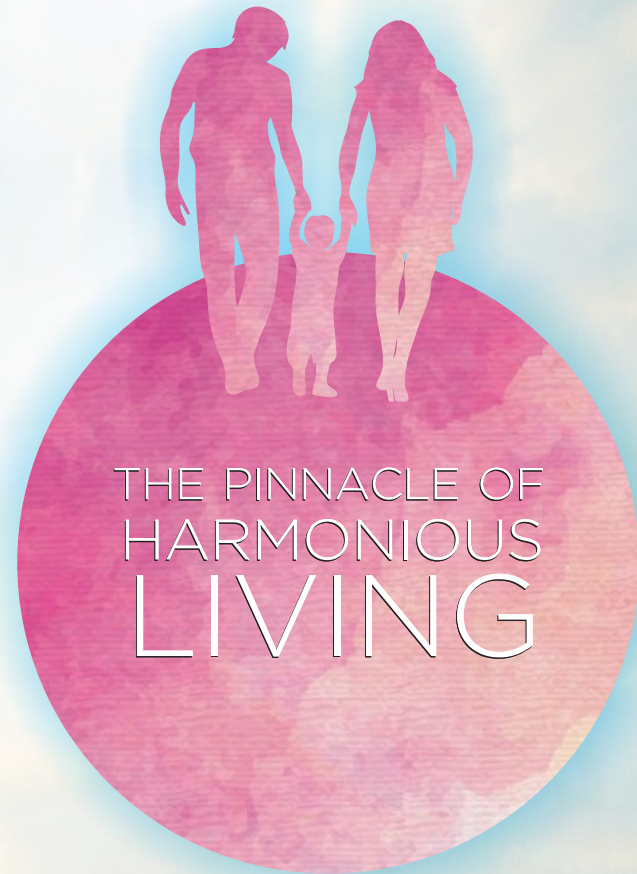
Site Office
Opp. 33 KVA Grid Sub Station
Canal Road, Landmark City,
Kunhari, Kota

For Sales Assistance Call : 7073877444, 9672742444, 9214447907

Disclaimer: The images are artist impressions and are for representation purpose only and should not be construed as a promise made by the developer for amenities in the building apartments. The delivery of the product will be as per the mutually agreed list of amenities which will be finalized with the purchaser individually and mentioned in the AGREEMENT/REGISTRATION FORM. Builders & Developers reserve the right to change any design & specification of the building without any prior notice or information/or as per approval of respective authorities. This brochure is for illustration purpose only & cannot in any way to be treated as a Legal Document/or a commitment on the builder part.

www.shubhamgroup.info

Email: enquiry@shubhamgroup.info • www.facebook.com/shubhamgroupkota



THE PINNACLE OF
HARMONIOUS
LIVING

Landmark
PARADISE

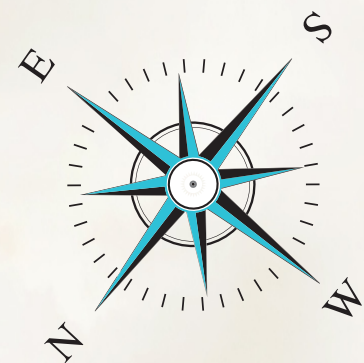
www.landmarkparadise.in





	FLATS#	SALEABLE AREA
▶	1,4,5,8	515.80sq.
▶	2,3,6,7	486.07sq.
▶	1-9 IN B/5 1-11 IN B/3	MIX. SIZE
▶	LOBBY AREA	

**TYPICAL FLOOR PLAN - B BLOCK
 (1ST TO 9TH FLOOR)
 1BHK / STUDIO APARTMENTS**





RERA REG. NO.
RAJ/P/2017/513



B.U. AREA
388.86 SQFT
SALEABLE AREA
486.07 SQFT

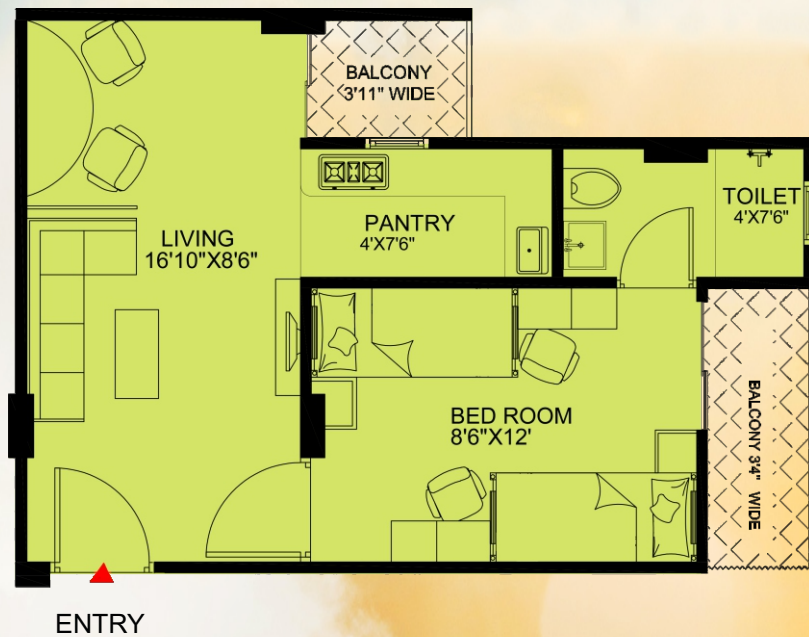
B.U. AREA
412.64 SQFT
SALEABLE AREA
515.80 SQFT



1 BHK CONTENTS

Room 1	✓
Balcony 1	✓
Room 2	✓
Balcony 2	✓
Pantry	✓
Washroom	✓

1 BHK
TYPICAL FLOOR PLAN



1 BHK
TYPICAL FLOOR PLAN



Landmark PARADISE

UNIQUE AMENITIES

MULTI FLOOR
MESS

SPORTS
COURTS

LAUNDRY
ZONE

HYPER
MARKET

CAFETERIA

ATM

BAKERY



3 BHK & 1 BHK

36 सुख सुविधाओं
के साथ

- | | | | |
|-----------------------------|--|---|--------------------|
| 1. भूकंप प्रतिरोधी बिल्डिंग | 12. हायपर मार्केट | 22. पर्याप्त पार्किंग स्पेस | 32. मल्टी लेवल मैस |
| 2. शॉपिंग कॉम्प्लेक्स | 13. प्रीमियम क्वालिटी एलिवेटर्स | 23. 24X7 वाटर सप्लाई | 33. कैफेटेरिया |
| 3. प्रदूषण मुक्त वातावरण | 14. सेपरेट बालकनी | 24. तकनीकी सुविधाएं | 34. लॉन्ड्री |
| 4. जिम | 15. जॉगिंग ट्रेक | 25. डिजाइनर एंट्रेंस गेट | 35. बेकरी |
| 5. वॉलीबॉल कोर्ट | 16. सामान्य क्षेत्र और लिफ्टों के लिए पावर बैकअप | 26. बेहतरीन साइन बोर्ड | 36. ए.टी.एम |
| 6. क्लब हाउस | 17. इंडोर गेम्स | 27. बेहतरीन लैंडस्केप व्यू | |
| 7. किड्स प्ले जोन | 18. चैस | 28. बांडूड़ी वॉल प्रोटेक्शन | |
| 8. बास्केटबॉल कोर्ट | 19. कैम | 29. 24X7 गार्ड और CCTV कैमरे के साथ सुरक्षा | |
| 9. स्केटिंग रिक | 20. स्विमिंग पूल | 30. उचित कचरा निपटान | |
| 10. कॉमन स्पेस | 21. वाटर कास्केड | 31. मनोरंजन की सुविधा | |
| 11. टेनिस कोर्ट | | | |



Landmark City
lifestyle at the edge of kota



YOU ARE HERE